



(585) 532-2060
14534 Rochester, NY

1000W H.I.D.
Replacement
Life 50000 hrs
26800LM LED



On-site service
Warranty available

Job reference	Qty.

P/N

Meets ANSI C136.31-2001, 3G vibration standards

Max. Power 240 Watts
Max. Output 26800 Lumens

50khrs
Energy Star TM-21

122
LPW

80+
CRI

347-480V
Available

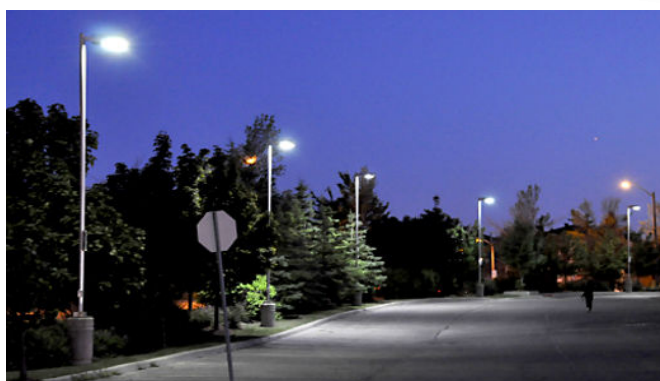
Street / Outdoor Parking / Floodlight
DLC SiteLight IP66
Specification Sheet v. 151113



SE-L304/SE-L404 Series in grey RAL7038



SE-L104/SE-L204 Series



7000 lumen 65W **DLC SiteLight** LED luminaire replaced 250W Metal Halide parking lot lights in Brampton, ON

27000 lumen 240W **DLC SiteLight** LED luminaire replaced 1000W Metal Halide in Brampton, ON retail plaza





(585) 532-2060
14534 Rochester, NY

1000W H.I.D.
Replacement
Life 50000 hrs
26800LM LED



On-site service
Warranty available

Job reference	Qty.

P/N

Meets ANSI C136.31-2001, 3G vibration standards

Max. Power 240 Watts
Max. Output 26800 Lumens

50khrs
Energy Star TM-21

122
LPW

80+
CRI

347-480V
Available

Street / Outdoor Parking / Floodlight
DLC SiteLight IP66
Specification Sheet v. 151113

Test reports			
performance	LED life	LED life	DLC QPL
LM79-08	LM80	TM21	Yes

LED drivers	LED modules
Meanwell™ H-series	Cree XML

Storage temperature		Operating temperature	
°C	°F	°C	°F
-40 / +70	-40 / +158	-40 / +35	-40 / +95

Product name	Series
DLC Site Light LED Luminaire	SE-L

CCT K	CRI	LED current mA	SMD max. efficacy* L/W
3000 - 5700	82	<50	138

Conformal coating	Ingress protection	Surge protection	Limited warranty
Acrylic	IP66	1kV	10 years

OPTICAL

Cat. Number	LM* Watts*	Efficacy* LM/W	CRI* min.	SDCM	L70 LED life* hours	IESNA distrib. Types	DLC QPL listed
SE-L104- 040-8xx-Tn-U	4900L 40W	122	80	3	50000	II., III., IV., V.	YES
SE-L104- 065-8xx-Tn-U	7000L 65W	108	80	3	50000	II., III., IV., V.	YES
SE-L204- 080-8xx-Tn-U	9300L 80W	116	80	3	50000	II., III., IV., V.	YES
SE-L204- 100-8xx-Tn-U	10800L 100W	108	80	3	50000	II., III., IV., V.	YES
SE-L304- 120-8xx-Tn-U	14200L 120W	119	80	3	50000	II., III., IV., V.	YES
SE-L404- 150-8xx-Tn-U	18500L 150W	124	80	3	50000	II., III., IV., V.	YES
SE-L304- 180-8xx-Tn-U	19950L 180W	110	80	3	50000	II., III., IV., V.	YES
SE-L404- 240-8xx-Tn-U	26800L 240W	112	80	3	50000	II., III., IV., V.	YES

ELECTRICAL 120-277V

Cat. Number	LM* Watts*	Input 50-60Hz VAC	Max. input* current A	Max. inrush current A @230V	Power factor* at 120V input PF	THD* at 120V input %	Electrical safety approvals
SE-L104- 040-8xx-Tn-U	4900L 40W	95-305	0.5	<15A	0.99	9.2	UL/cUL
SE-L104- 065-8xx-Tn-U	7000L 65W	95-305	0.7	<25A	0.98	6.6	UL/cUL
SE-L204- 080-8xx-Tn-U	9300L 80W	95-305	0.9	<30A	0.95	6.4	UL/cUL
SE-L204- 100-8xx-Tn-U	10800L 100W	95-305	1.1	<35A	0.96	6.7	UL/cUL
SE-L304- 120-8xx-Tn-U	14200L 120W	95-305	1.3	<40A	0.97	9.2	UL/cUL
SE-L404- 150-8xx-Tn-U	18500L 150W	95-305	1.6	<50A	0.95	6.9	UL/cUL
SE-L304- 180-8xx-Tn-U	19950L 180W	95-305	1.8	<60A	0.99	8.9	UL/cUL
SE-L404- 240-8xx-Tn-U	26800L 240W	95-305	2.5	<75A	0.99	8.9	UL/cUL

MECHANICAL

Cat. Number	LM* Watts*	Dimensions			Mounting tennon dia. 60-65mm O.D.	Weight kg / lbs	Housing / Lens material
		M.O.L. mm / in	W mm / in	H mm / in			
SE-L104- 040-8xx-Tn-U	4900L 40W	458 / 18	260 / 10.25	52 / 2.1	2" IP to 2.5"	3 / 6.6	AL/PMMA
SE-L104- 065-8xx-Tn-U	7000L 65W	458 / 18	260 / 10.25	52 / 2.1	2" IP to 2.5"	3 / 6.6	AL/PMMA
SE-L204- 080-8xx-Tn-U	9300L 80W	458 / 18	260 / 10.25	52 / 2.1	2" IP to 2.5"	3 / 6.6	AL/PMMA
SE-L204- 100-8xx-Tn-U	10800L 100W	458 / 18	260 / 10.25	52 / 2.1	2" IP to 2.5"	3 / 6.6	AL/PMMA
SE-L304- 120-8xx-Tn-U	14200L 120W	572 / 23	260 / 10.25	52 / 2.1	2" IP to 2.5"	6.5 / 14.3	AL/PMMA
SE-L404- 150-8xx-Tn-U	18500L 150W	572 / 23	260 / 10.25	52 / 2.1	2" IP to 2.5"	6.5 / 14.3	AL/PMMA
SE-L304- 180-8xx-Tn-U	19950L 180W	572 / 23	260 / 10.25	52 / 2.1	2" IP to 2.5"	6.5 / 14.3	AL/PMMA
SE-L404- 240-8xx-Tn-U	26800L 240W	572 / 23	260 / 10.25	52 / 2.1	2" IP to 2.5"	6.5 / 14.3	AL/PMMA

NOTES

*L80, L70, Lumens, CRI, Watts, Lumens per Watt, input current, P.F. and T.H.D. hereby published values are established by LM-80 and LM79-08 testing with NVLAP accredited testing laboratory and Energy Star and DLC submissions in ideal laboratory conditions. Lumens are "Hot" lumens tested at min. CRI 70. Rounded to the nearest one-hundred where applicable. DLC QPL Qualified where identified, CE pending.

OPTIONS AND OPTIONAL ACCESSORIES

Suffix	Description	Notes
-8xx	xx: 830 for CCT3000K, 835 for CCT3500K, 840 for CCT 4000K, 850 for CCT5000K, 856 for CCT5600K	Options
-3	347V : replace -U suffix with -3 for 200-480V input. Only available with 65W, 120W, 150W, 180W and 240W models	Options
-Tn	n : Distribution type: 2 for Type II., 3 for Type III., 4 for Type IV., and 5 for Type V.	Options
Finishes	Suffixes: -GR : grey RAL7038, -WH : white, -BK : black RAL9017, -BR : brown RAL8028, -CU1234 : custom RAL paint code	Options
D1	D1 : dimming 0-10V	Special order
D1S	D1S : dimming 0-10V with stand-by function	Special order
PC	7-prong NEMA C136-41 photocell receptacle - Photocell by others	Special order
WG	Wireguard	Special order
WM-12	Wall mounting plate with 12" tenon	Special order
SQ	Square-tenon adapter	Special order
SQR-12	12" tenon with gasket - universal mount on round poles (available 1Q 2016)	Special order

ADDITIONAL SPECIFICATIONS

> Designed from the ground up as a totally optimized LED street light and area light system, the SE-L Series delivers market leading efficiency without sacrificing performance. Beyond substantial energy savings and reduced maintenance, Save Energy Lighting achieves better optical control with SlimOptic® Precision Delivery Lens™ optic than a traditional cobra head luminaire. The Save Energy Lighting SE-L Series LED Street Light is the optimum alternative for traditional street lighting or parking lot / security lighting, with better payback and better performance.

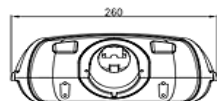
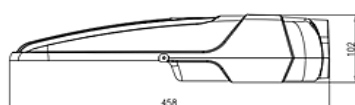
- > UL/cUL listed
- > Integral SPD 20kV surge suppression protection standard
- > Types II., III., IV. and V.
- > Tool-less access to driver and connections compartment for ease of servicing
- > Each LED module is protected by independent Bussman slow blow fuse
- > LEDs are protected with Conformal Coating. Continue to operate if enclosure is punctured or when the lens is accidentally damaged or removed
- > High efficiency and unique heat dissipation keep drivers Tc at <60°C. Driver life >120000 hrs @25°C ambient room temperature
- > Lightweight, easy to handle one person installation
- > Listed for Dry, Damp and Wet locations. Outdoor UV, ozone, salt spray & salt water resistant with 3-layer paint coat
- > Luminaire and finish endurance are tested to withstand 5000 hours of elevated ambient salt fog conditions as defined in ASTM Standard B 117
- > Meets ANSI C136.31-2001, 3G bridge and overpass vibration standards
- > Meets FCC Part 15 standards for conducted and radiated emissions
- > Meets CALTrans 611 Vibration testing
- > 10kV surge suppression protection tested in accordance with IEEE/ANSI C62.41.2
- > Housing material: High density precision casted Aluminum alloy
- > 3-layer paint coat protects housing from all elements, including outdoor UV, ozone, salt spray & salt water
- > Continuously poured white high density urethane gasket. Each gasket is tested for 100% performance
- > Lens: Clear impact resistant Lexan™ polycarbonate
- > All internal componen assemblies are rated IP66 per IEC 60529
- > NSF rated materials and components
- > UL94 5VA flame resistance
- > Each production luminaire is tested for Lumens, CCT, Watts, PF and THD. Burn-in time 72 hours at 35°C ambient
- > Manufactured in Canada from domestic and imported materials
- > DesignLights Consortium® Qualified Product List listed models where indicated

WARRANTY

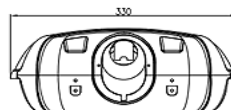
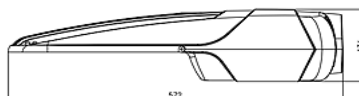
Ten year limited warranty on product(s) operating under typical commercial conditions that do not exceed 12hrs/day and 4400hrs/yr.

Luminaires must be configured and supplied with photocells to prevent random daylight operation.

Five year limited warranty with operating cycles in excess of 12hrs/day and luminaires installed without a photocell. Exceeding maximum specified Ambient Operating Temperature will void the warranty. See full warranty details in the Save Energy Lighting Ltd. Warranty Statement



SE-L104/SE-L204 Series



SE-L304/SE-L404 Series

Housing Color Options

- ☐ Grey RAL7038
- ☐ Brown RAL8028
- ☐ Black RAL9017
- ☐ White
- ☐ Custom

All trade-marks used are under the ownership of their respective owners

Published data are based on laboratory testing results under 25°C/77°F and controlled environmental conditions.

Actual performance may vary depending on specific operating conditions. All specifications are subject to change without notice

Copyright © 2015 and Patent Pending. All rights reserved



(585) 532-2060
14534 Rochester, NY

1000W H.I.D.
Replacement
Life 50000 hrs
26800LM LED



On-site service
Warranty available

Job reference	Qty.

P/N

Meets ANSI C136.31-2001, 3G vibration standards

Max. Power 240 Watts
Max. Output 26800 Lumens

50khrs
Energy Star TM-21

122
LPW

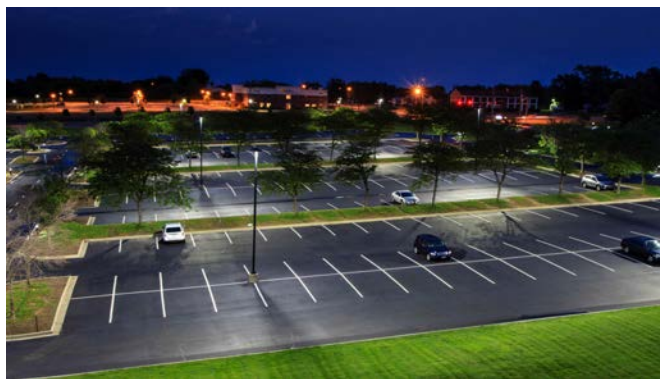
80+
CRI

347-480V
Available

Street / Outdoor Parking / Floodlight
DLC SiteLight IP66
Specification Sheet v. 151113



27000 lumen 240W **DLC SiteLight** replaced in the parking lot in front of Crafters store in Toledo, OH



18500 lumen 150W **DLC SiteLight** replaced
400W Metal Halide parking lot lights in
Brampton, ON





LIGHTING
Est./ Etabli. 1983
Quality Fully Guaranteed

1000W H.I.D.
Replacement
Life 50000 hrs
26800LM LED



On-site service
Warranty available



Meets ANSI C136.31-2001, 3G vibration standards

Job reference	Qty.

P/N

Max. Power 240 Watts
Max. Output 27000 Lumens

50khrs
Energy Star TM-21

122
LPW

80+
CRI

347-480V
Available

Street / Outdoor Parking / Floodlight
DLC SiteLight IP66
Specification Sheet v. 151113



27000 lumen 240W **DLC SiteLight** LED luminaire replaced 1000W Metal Halide parking lot lights in Dartmouth, NS car dealership



27000 lumen 240W **DLC SiteLight** replaced 1000W Metal Halide in Brandon, MB car dealership





(585) 532-2060
14534 Rochester, NY



80+
CRI

Up to 124
LPW

Up to 92khrs
Energy Star TM-21

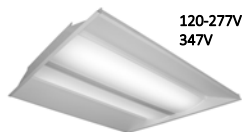
Up to 320W
38000 Lumens



Valid where indicated,
or pending



LED Luminaires 2015-2016



120-277V
347V

Commercial Troffers 2x2 and 2x4
3000 - 6000 lumens



120-277V
347V

Commercial Troffers 2x2 and 2x4
3000 - 10000 lumens



120-277V
347V

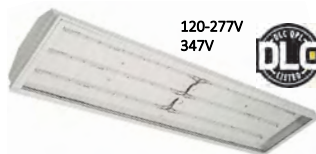
LED Panels
3000 - 7000 lumens
2x2, 2x4 and 1x4



120-277V
347V



Vaportite Low Bay IP67 / NSF / FDA
3000 - 9900 lumens, 2, 4 and 5



120-277V
347V



Commercial High Bay
12000 - 38000 lumens
Wireguard / Clear / Diffused lens



120-277V
347V



Industrial High Bay IP67
12000 - 19400 lumens
IP67 certified, NSF / FDA certified



120-277V
347V

Low Bay and Canopy lights IP65
2400 - 6300 lumens



120-277V
347V

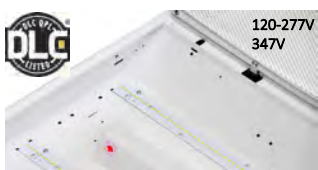
Retail Commercial High Bay
11000 - 22000 lumens



120-277V
347V

Heavy Duty industrial High Bay, IP65 outdoor
Spot/Flood 20-120 Deg. 12000 - 36000 lumens

LED retrofit Upgrade Kits



120-277V
347V

Retrofits all Strip Fixtures and Troffers
incl. all louvered types. Up to 9900 lms.



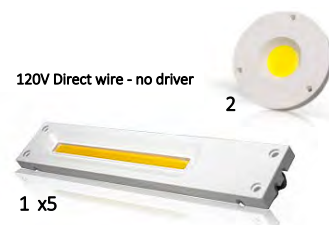
120-277V
347V

Low Bay / Canopy retrofits
replace up to 250W HID



120-277V

High Bay screw-in, or hook
replaces 250 to 400W HID



120V Direct wire - no driver

2

1 x5

Wall Sconce / Step Lights retrofits
6W - 11W - 22W up to 2000 lumens

WARRANTY

Ten-year limited warranty on products operating in commercial air-conditioned spaces with max. ambient temperature 35°C/95°F and operating cycles that do not exceed 12hrs/day and 4400hrs/yr. Six-year limited warranty with ambient temperatures less than 45°C/110°F with cycles that do not exceed 12hrs/day. Five-year limited warranty with all other operating cycles. Exceeding maximum specified Ambient Operating Temperature will void the warranty.